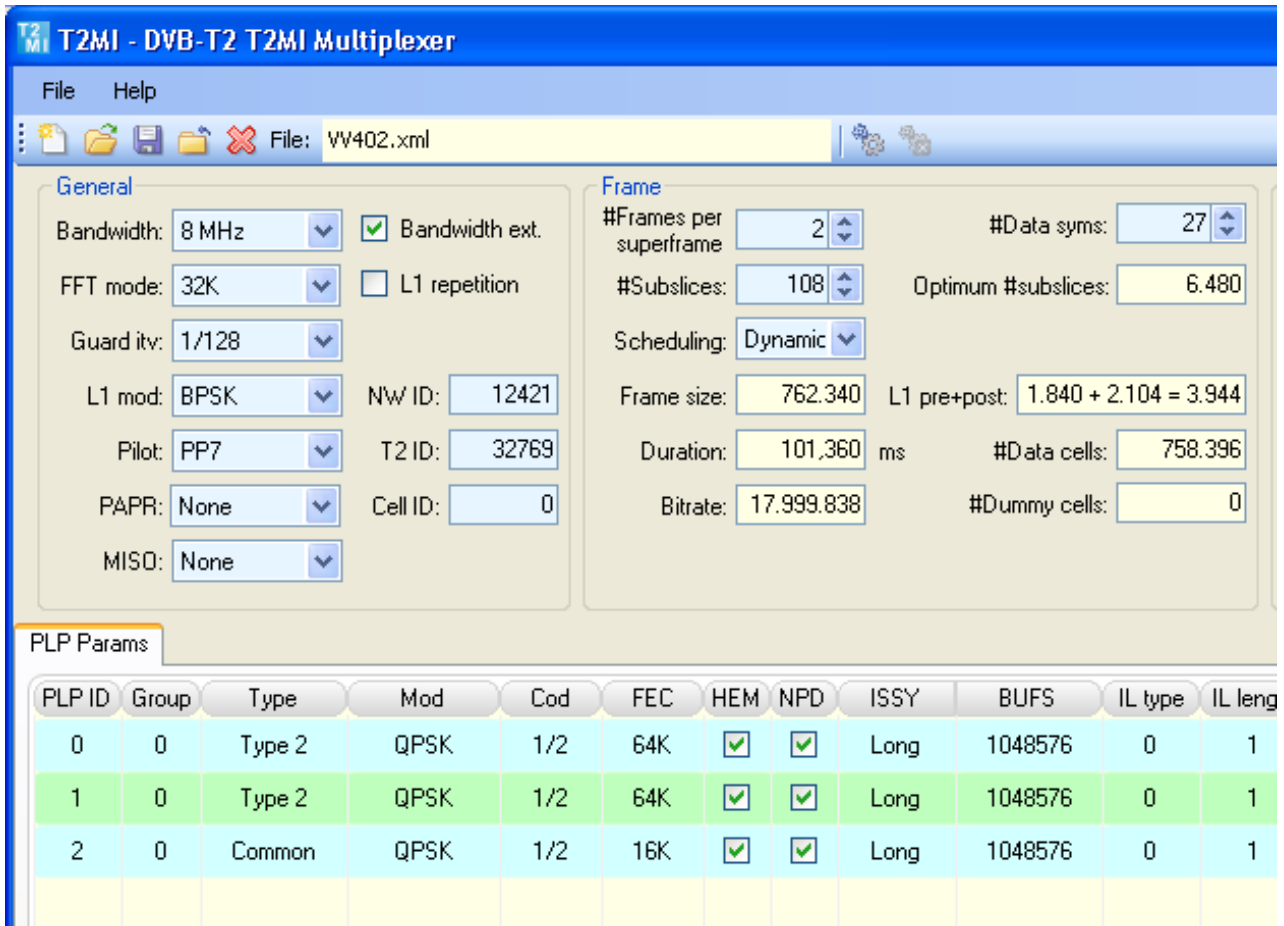


DVB-T2 Gateway with File Input

- ❑ Output: T2-MI over ASI or T2-MI in file
- ❑ Supports multi-PLP, MISO and TFS
- ❑ "Big TS" splitter function



FEATURES

- DVB-T2 gateway with file input and T2-MI output written to a file, or real-time T2-MI over ASI and IP output
- Input from Transport-Stream files or built-in O151 PRBS test-signal generator
- "Big-TS splitter" function with SI processing for easy generation of multi-PLP streams with a common PLP
- Full user control over general DVB-T2 parameters, T2-Frame structure and parameters per PLP
- Generated T2-MI can be played out with **StreamXpress**
- MISO simulation: Generation of both MISO transmitter signals

APPLICATIONS

- Multi-PLP test-signal generator for the development of DVB-T2 equipment
- Multi-PLP signal generator for DVB-T2 receiver demonstrations and field trials

SUPPORT

- **T2MI** is being improved continuously and keeps track of developments in the DVB-T2 working group. Any product updates will be free for a period of at least one year after invoice date

SUPPORTED DVB-T2 PARAMETERS

| Parameter | Range |
|------------------|---|
| <i>General</i> | |
| Bandwidth | 1.7, 5, 6, 7, 8 or 10MHz |
| FFT mode | 1K, 2K, 4K, 8K, 16K or 32K |
| Guard interval | 1/32, 1/16, 1/8, 1/4, 1/128, 19/128 or 19/256 |
| L1 modulation | BPSK, QPSK, 16/64-QAM |
| Pilot pattern | PP1 .. PP8 |
| Bandwidth ext. | Extended carrier mode yes/no |
| PAPR | None, ACE, TR, ACE+TR (signalling only) |
| MISO | Tx1 and/or Tx2, Tx1+Tx2 |
| IDs | Network, Cell, T2 System |
| <i>PLP</i> | |
| IDs | PLP ID, Group ID |
| Type | Type 1, Type 2, Common |
| Modulation | QPSK, 16/64/256-QAM |
| Code rate | 1/2, 3/5, 2/3, 3/4, 4/5, 5/6 |
| FEC | 16K or 64K |
| HEM | High-efficiency/Normal mode |
| NPD | On/off |
| ISSY insertion | None, Long, Short BUFS, Tdesign |
| Time interleaver | Type, Length, Interval, 1 st Frame |
| Constellation | Rotated, Normal |
| Signalling | In band, None |
| Other PLPs | List in in-band signalling yes/no |
| FF | PLP on same channel yes/no |
| <i>Frame</i> | |
| Structure | #T2 frames, #T2 sub slices, #data symbols |
| Scheduling | Static/dynamic #FEC blocks |
| <i>Source</i> | |
| PRBS | O151 PRBS test signal |
| TS | One (partial) stream per PLP |
| Big TS | T2IQ extracts partial streams |
| <i>TFS</i> | |
| #Carriers | 1 .. 7 |
| <i>FEF</i> | |
| Parameters | Type, S1, S2, Length, Interval |
| Signal | Zero, 1K OFDM of PRBS signal |
| <i>Output</i> | |
| T2-MI | VBR or CBR |

OUTPUT MODES

| Type | Description |
|-----------|---|
| Offline | T2-MI in file |
| Real-time | T2-MI over DVB-ASI T2-MI over IP (DTA-160) |

PC REQUIREMENTS

| | |
|------------|--|
| Platform | Windows XP/2003/Vista .NET v2.0 |
| Processor* | P4@2.0GHz (off-line gen.) Core 2, Core i7 (real-time) |
| RAM | 1 GB min. |

* Or equivalent AMD processors

RELATED PRODUCTS

| Type | Description |
|-------------|---|
| DTA-115 | Multi-standard modulator with VHF/UHF upconverter for PCI |
| DTU-215 | Multi-standard modulator with VHF/UHF upconverter for USB |
| DTA-2135-T2 | DVB-T2 receiver for PCI |
| DTC-300 | StreamXpress playout software |
| DTC-385 | T2IQ DVB-T2 I/Q sample generator |

ORDERING INFORMATION

| Type | Description |
|---------|--|
| DTC-384 | T2MI DVB-T2 gateway with file input |

Please refer to www.dektec.com for the latest pricing and a list of distributors and resellers.