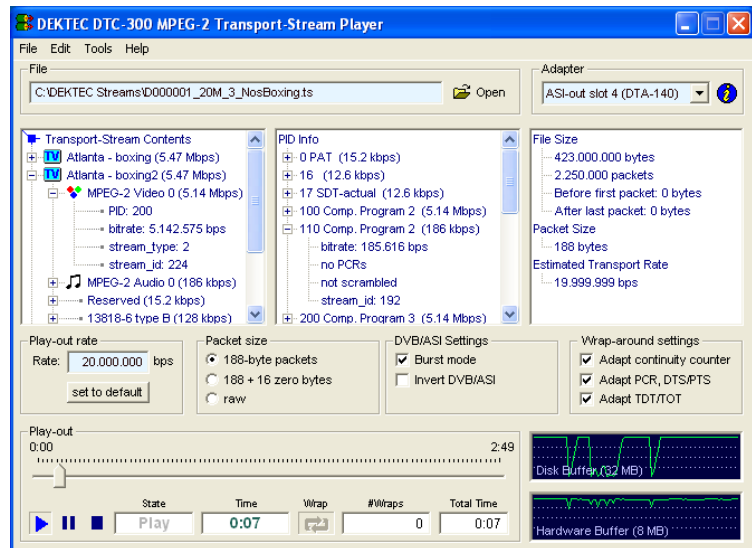


Stream Player Software

- Integrated (P)SI viewer, looping
- Remote control option
- Selective error injection

FEATURES

- Integrate yourself a low-cost, high-performance stream player using a standard- or industrial PC, a DekTec output adapter and the *StreamXpress* playout software
- Integrated (P)SI viewer
- Control of modulation parameters
- Optional channel modeling of RF output signal
- Integrated ISDB-T hierarchical multiplexer
- Supports DTA-Plus RF attenuator
- Play-out at a higher rate by null-packet stuffing with PCR correction
- Endless play with optional automatic correction of continuity-counter and PCR/PTS/DTS fields
- Automatic computation of transport rate
- Reproducible injection of errors in the transport stream with adjustable error rate
- SOAP-based remote control option



APPLICATIONS

- Universal test- stream generator for feeding set-top boxes, digital TVs, digital-video processing equipment, etc.
- Demos at trade shows, in stores, etc.
- Test-signal generator for ATE environments

SUPPORTED OUTPUT ADAPTERS

Signal Type	Supported Adapters
DVB-ASI	DTA-100, DTA-112, DTA-115, DTA-140, DTE-3100, DTU-205
ASI/SDI	DTA-145, DTA-160, DTA-545, DTA-2142, DTA-2144, DTA-2145, DTU-205, DTU-245
DVB-SPI	DTA-102, DTA-2142
Modulators	DTA-107S2, DTA-110T, DTA-112, DTA-115, DTA-116, DTA-117, DTU-215
TSoIP	DTA-160
I/Q Samples	DTA-115, DTA-116, DTA-117, DTU-215

RELATED PRODUCTS

Type	Description
DTC-302-RC	Remote-control option
DTC-305-CM	Channel-modelling option

PC REQUIREMENTS

Platform	XP/2k3/Vista/2k8/Win7, 1GB
Processor*	PIII (ASI) .. Core 2 (DVB-T2)

* Or equivalent AMD processor

ORDERING INFORMATION

Type	Description
DTC-300	<i>StreamXpress</i> stream player software

Please refer to www.dektec.com for the latest pricing and a list of distributors and resellers.