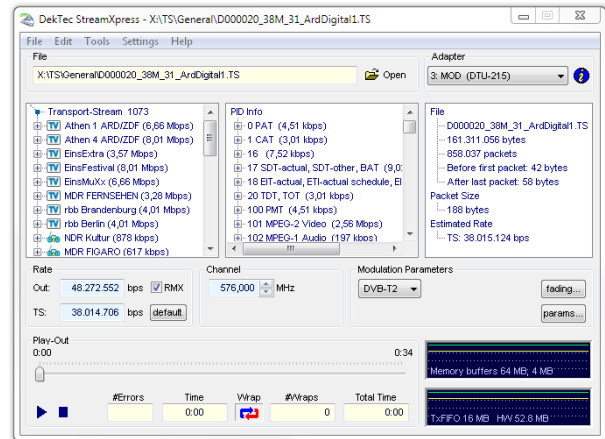


## Industry-Standard Stream Player Software

- Integrated (P)SI viewer, looping
- Full control of DekTec modulators
- Remote control for automation

### FEATURES

- Build yourself a low-cost, versatile stream player using a standard- or industrial PC, a DekTec output adapter and **StreamXpress®** playout software
- Streams DTV signals from file: baseband (ASI, SDI), modulated (RF) or TS-over-IP
- Integrated (P)SI viewer
- Integrated test-signal generator
- Advanced support for several modulation standards, including DAB+, DVB-S2X, DVB-T2 and ISDB-S/T
- Play-out at a higher rate by null-packet stuffing with PCR correction
- Endless play with optional automatic correction of continuity-counter and PCR/PTS/DTS fields
- Automatic computation of transport rate
- Reproducible injection of errors in the transport stream with adjustable error rate



### APPLICATIONS

- Universal test- stream generator for feeding set-top boxes, digital TVs, digital-video processing equipment, etc.
- Demos at trade shows, in stores, etc.
- Test-signal generator for ATE environments

### SUPPORTED SIGNAL TYPES

| Signal Type | Adapters   |
|-------------|--|
| DVB-ASI     | DTA-105, 115, 145, 160<br>DTA-2144, 2145, 2152, 2154, 2160, 2174, 2179<br>DTE-3100; DTU-205, 245 |
| SD-SDI      | DTA-145, 2144, 2145, 2152, 2154, 2160, 2174, 2179  |
| HD-SDI      | DTA-2152, 2154, 2174, 2179   |
| 3G-SDI      | DTA-2174, 2179   |
| DVB-SPI     | DTA-2142   |
| Modulators  | DTA-107, 115<br>DTA-2107, 2111, 2115<br>DTU-215, 315   |
| TS-over-IP  | DTA-160, 2160, 2162  |
| I/Q Samples | DTA-115, 2107, 2111, 2115<br>DTU-215, 315  |

### PC REQUIREMENTS

|            |   |
|------------|---|
| Platform   | Win XP, Vista, 2k3/2k8, 7/8/10                      |
| Processor* | Core i3 or better<br>Core i7 or better (modulation) |

\* Or equivalent AMD processor

### ORDERING INFORMATION

| Type       | Description   |
|------------|---|
| DTC-300    | <b>StreamXpress®</b> player software                          |
| DTC-302-RC | SOAP-based remote control option for <b>StreamXpress®</b>     |
| DTC-305-CM | Channel-simulation option                                     |
| DTA-xxx-SP | (SP option) Bundle of DekTec adapter and <b>StreamXpress®</b> |
| DTU-xxx-SP | (SP option) Bundle of DekTec adapter and <b>StreamXpress®</b> |

Please refer to [www.dektec.com](http://www.dektec.com) for the latest pricing and a list of distributors and resellers.