

DVB-C2 Receiver and Analyzer Software

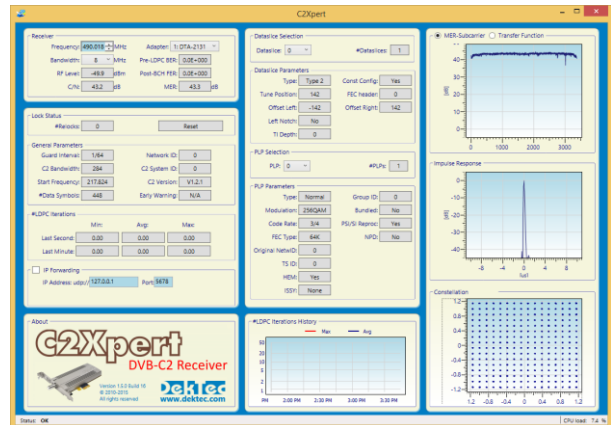
- Shows all DVB-C2 parameters
- Multi dataslice and multi PLP support
- Works with DTA-2131 SDR receiver

FEATURES

- Advanced analyzer that demodulates and decodes all parts of a DVB-C2 signal
- Outputs a demodulated Transport Stream on UDP
- Shows all DVB-C2 signalling information
- Uses the DTA-2131 SDR receiver card
- Measures RF level, C/N and MER
- Gathers statistics about number of LDPC iterations required to correct all errors and displays LDPC iterations history in a graph
- Other advanced measurements include constellation diagram per PLP, impulse response, MER per PLP and transfer function
- Includes DtTV and DtGrabber+

APPLICATIONS

- General-purpose DVB-C2 analyzer
- DVB-C2 field trials and demonstrations
- Validation of DVB-C2 signals



PARAMETERS DISPLAYED IN GUI

Group	Parameters
RF	RF level, C/N, MER
General	GI, C2BWt, Start freq, #Data symbols, Network ID, System ID, C2 version, Early warning
Per data slice	Type, Const conf, Tune pos, FEC header, Offset left/right, Left notch, TI depth
Per PLP	Type, Group ID, Code rate, FEC, Modulation, In-band, HEM, NPD, Bundled, PSI/SI reproc, TS ID, ISSY

PC REQUIREMENTS

Platform	Windows 2k8/12/16, 7, 8, 10
Processor	Core i7-4xxx or above (or AMD equivalent)

RELATED PRODUCTS

Type	Description
DTA-2131	Multi-standard cable/terrestrial SDR receiver for PCIe

ORDERING INFORMATION

Type	Description
DTC-344-XPRT	Advanced RF measurements with Atsc3Xpert, C2Xpert, T2Xpert
DTA-2131-XPRT	Multi-standard cable/terrestrial receiver with Atsc3Xpert, C2Xpert and T2-Xpert

Please refer to www.dektec.com for the latest pricing and a list of distributors and resellers.