

## Transport-Stream Analyzer Software

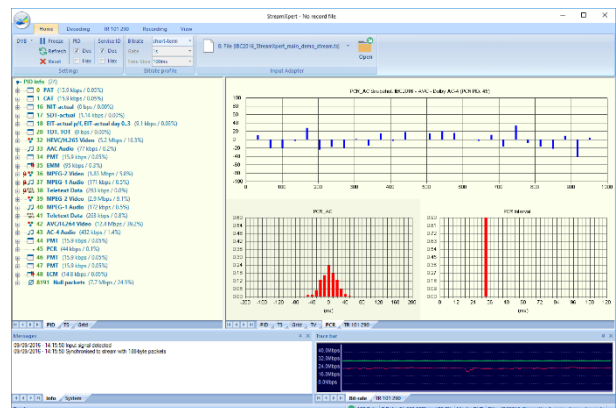
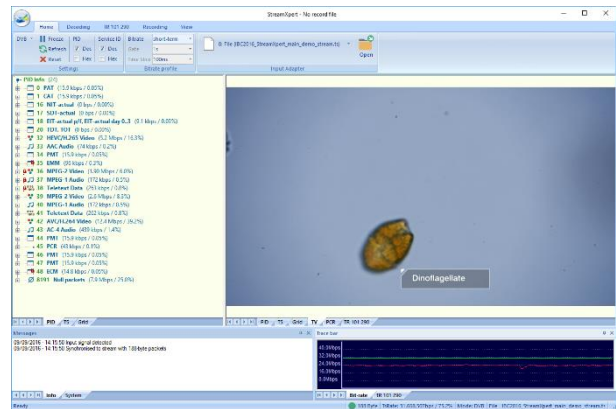
- ❑ Full decoding of DVB/SI and ATSC/PSIP
- ❑ Real-time TR 101 290 monitoring
- ❑ SD/HD live decoding; PCR analysis

### FEATURES

- Real-time and offline analysis of transport streams with intuitive user interface
- Deep decoding of tables and descriptors with customizable templates for decoding of custom tables and descriptors
- Integrated video and audio decoder supporting all industry-standard streams including MPEG-2, AVC and HEVC video and MPEG-1/2, AAC, MPEG-H, AC-3/AC-4 audio
- OTT analysis HTTP Smooth Streaming and MPEG-DASH manifests visualization
- User-definable TR 101 290 templates
- Analysis of TS-over-IP streams via DTA-2160/2162 or local network port

### APPLICATIONS

- The world's most cost-effective and user-friendly transport-stream analyzer
- Test and validation of equipment with transport-stream output, e.g. multiplexers
- Quality monitoring of transport streams in studios, head ends, etc.



### SUPPORTED INPUT ADAPTERS

Signal Type	Supported Adapters
DVB-ASI	DTA-115, 145, 160, 2144B, 2145 DTA-2152, 2154, 2160, 2172, 2174 DTA-2175, 2178, 2179, 2195 DTU-245B; DTE-3120
DVB-SPI	DTA-122, 2142
Receivers	DTA-2131, 2132, 2136, 2137C, 2138, DTA-2139; DTU-236A, 238; DTE-3137
TS over IP	DTA-160, 2160, 2162, PC NIC

### PC REQUIREMENTS

Platform	Windows 7,8,10 Windows Server 12,16,19
Processor*	Core i5 4 <sup>th</sup> generation minimum Core i7 4 <sup>th</sup> generation recommended

\* Or equivalent AMD processor

### RELATED PRODUCTS

Type	Description
DTU-245-SXP	ASI/SD-SDI input+output for USB-2 with <i>StreamXpert</i> ® 2.0 stream analyzer and <i>StreamXpress</i> ® player
DTC-335-SY	<i>SdEye</i> ® – SDI analyzer software
DTC-720-XP	<i>Xpect</i> ® <i>Mosaic</i> – 24/7 transport-stream monitoring and multiviewer

### ORDERING INFORMATION

Type	Description
DTC-320-SX	<i>StreamXpert</i> ® TS analyzer
DTC-320-NIC	<i>StreamXpert</i> ® for PC NIC (dongle)

Please refer to [www.dektec.com](http://www.dektec.com) for the latest pricing and a list of distributors and resellers.