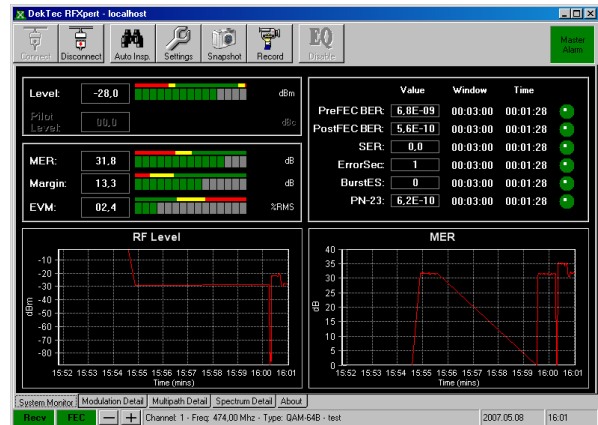


# RF Analysis and Monitoring Software

- ❑ Real-time RF measurements on a laptop
- ❑ QAM and 8-VSB probing with DTU-236A
- ❑ DVB-T/T2 measurements with DTU-238

## FEATURES

- Real-time analysis of modulated digital TV signals using the DTU-236A and/or the DTU-238 RF probes for USB-2
- Main window displays overview of current RF status, monitor status and RF level and MER histograms
- Master alarm indicators for a quick check of signal integrity
- Several windows with graphs for assessment of signal quality
- Alarm logging with configurable pass/warn/fail thresholds
- Logging of RF statistics with programmable averaging window size
- Supports creation of a channel plan for easy tuning; Standard channel plans and auto-channel search are provided
- Auto-inspect feature allows the automatic measurement and logging of every channel within the defined channel plan



## APPLICATIONS

- With DTU-236A or DTU-238 RF Probe: Comprehensive solution for doing digital television fieldwork on a laptop computer
- Continuous monitoring of DVB-T2, DVB-T, 8-VSB or QAM-A/B/C signals
- *RFXpert* can run with *StreamXpert* for simultaneous RF measurements and transport-stream analysis

## KEY ATTRIBUTES

Indicators and Graphs
PreFEC BER, PostFEC BER, SER, Error seconds
RF-level histogram vs time
MER histogram vs time
Constellation and eye diagram
Multipath echo profile
Channel response
Channel-, adjacent- and system spectrum

## SUPPORTED INPUT ADAPTERS

Bus	Supported Adapters
DTU-235	DVB-T RF probe for USB-2
DTU-236A	8VSB / QAM-A/B/C and ASI analysis probe for USB-2
DTU-238	DVB-T/T2C, ISDB-T and ASI analysis probe for USB-2

Note: The latest version of RFXpert (v3.0.0) currently supports DTU-238 and DTU-236A only. If you have a DTU-235 or DTU-236, do not upgrade RFXpert and/or the dtu driver yet but continue to use RFXpert v2.6.3.

## ORDERING INFORMATION

Type	Description
DTC-340	<i>RFXpert</i> real-time RF analysis and monitoring software

Please refer to [dektec.com](http://dektec.com) for the latest pricing and a list of distributors and resellers.