

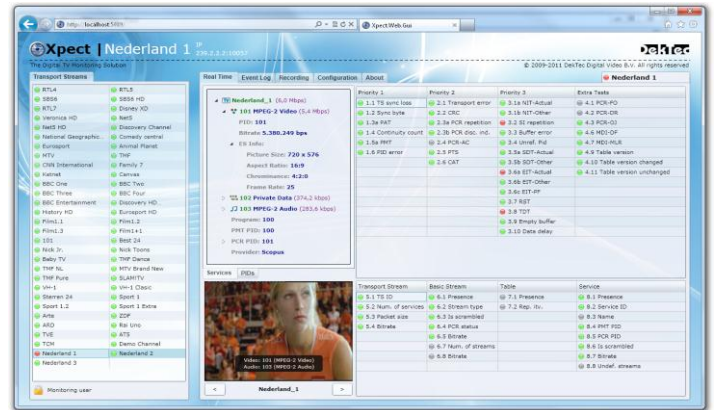


## 24/7 Transport-Stream Monitoring Software

- ❑ Full TR 101 290 priority 1, 2 & 3 tests
- ❑ User-defined template matching
- ❑ Long-term logging of stream statistics

### FEATURES

- Simultaneous monitoring of multiple Transport Streams
- TR 101 290 conformance testing:
  - Priority 1, 2 & 3 (with buffer analysis)
  - PCR AC, FO, DR and OJ
  - MGB bitrate measurement
- Template matching: checks properties of TS, services, service components and tables
- Capturing of monitored Transport Stream to a file with pre- and post-trigger buffers; client initiated or triggered by a violation
- Maintains detailed statistical information:
  - Minimum/maximum/average bitrate
  - PCR statistics: AC, FO, DR and OJ
  - Delay Factor and Packet Loss
- Database stores events (positive and negative) for each monitored stream
- UDP notifications per logged event
- SOAP and SNMP interface for remote control and automated access to captured TS files, statistics and error-event database
- Web interface for overall status indication, live video and audio decoding, remote configuration and access to event log



- Easy integration with 3<sup>rd</sup>-party NMS
- Includes configuration tool for easy creation of TR 101 290 and template-matching profiles
- Forwarding of any monitored Transport Stream over IP for remote real-time analysis or viewing (if using DTA-160)

### APPLICATIONS

- 24/7 network supervision
- Automated equipment test and validation
- QoS maintenance: early visibility of faults
- SLA monitoring

### SUPPORTED INPUT ADAPTERS

| Signal Type | Supported Adapters   |
|-------------|--|
| DVB-ASI     | DTA-145, DTA-160, DTA-2160, DTA-2144, DTA-2145, DTU-225*, DTU-245* |
| DVB-S/S2    | DTA-2137   |
| DVB-T       | DTA-2135   |
| QAM         | DTA-2136, DTA-2139   |
| TS-over-IP  | DTA-160, DTA-2160  |

\* For evaluation and demos, not recommended for operational use

### RELATED PRODUCTS

| Type    | Description  |
|---------|--|
| DTC-320 | <i>StreamXpert</i> Transport Stream analyser for interactive usage |

### KEY ATTRIBUTES

| Parameter                             | Value  |
|---------------------------------------|--|
| Max. #TS for simultaneous monitoring* | 20x MPTS @ 75Mbps per MPTS<br>50x MPTS @ 30Mbps per MPTS<br>250x SPTS @ 6Mbps per SPTS |
| Platform                              | 64-bit Win XP/2k3/Vista/2k8/7  |

\* Requires sufficiently powerful CPU and adequate memory

### ORDERING INFORMATION

| Type        | Description   |
|-------------|---|
| DTC-720-nPT | <i>Xpect</i> monitoring, <i>n</i> points:<br>¼ point for each radio SPTS;<br>½ point for each TV SPTS;<br>4 points for each MPTS. |