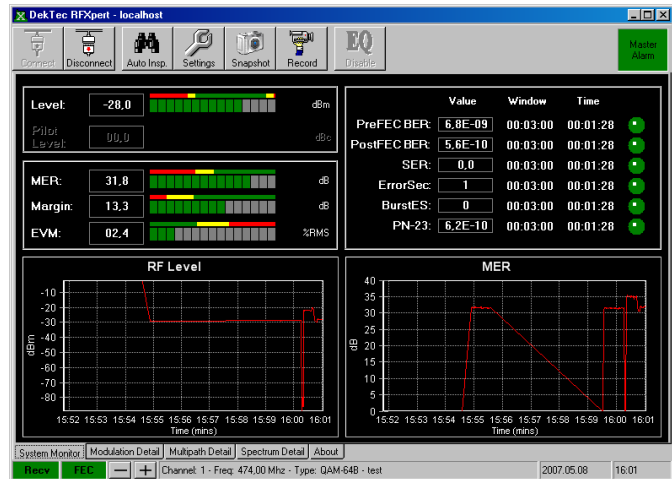


# RF Monitoring and Analysis Software

- Real-time RF analysis on your laptop
- DVB-T measurements with DTU-235
- QAM and 8-VSB probing with DTU-236

## FEATURES

- Real-time analysis of modulated digital TV signals using DTU-235 or DTU-236 USB-2 RF probe
- Main window displays overview of current RF status, monitor status and RF level and MER histograms
- Master alarm indicators for a quick check of signal integrity
- Several windows with graphs for assessment of signal quality
- Alarm logging with configurable pass/warn/fail thresholds
- Logging of RF statistics with programmable averaging window size
- Client-server architecture: *RFXpert* can connect to the RF probe over a network
- Supports creation of a channel plan for easy tuning; Standard channel plans and auto-channel search are provided
- Auto-inspect feature allows the automatic measurement and logging of every channel within the defined channel plan



## APPLICATIONS

- Continuous monitoring of DVB-T, 8-VSB or QAM-A/B/C signals
- With DTU-235 or DTU-236 RF Probe: Comprehensive solution for doing digital television fieldwork on a laptop computer
- *RFXpert* can run with *StreamXpert* for parallel RF and transport-stream analysis

## KEY ATTRIBUTES

Indicators and Graphs
PreFEC BER, PostFEC BER, SER, Error Seconds
RF-level histogram vs time
MER histogram vs time
Constellation and Eye Diagram
Multipath Echo Profile
Channel Response
Channel-, Adjacent- and System Spectrum

## SUPPORTED INPUT ADAPTERS

Bus	Supported Adapters
DTU-235	DVB-T RF probe for USB-2
DTU-236	8-VSB / QAM-A/B/C RF probe for USB-2 with ASI input

## ORDERING INFORMATION

Type	Description
DTC-340	<i>RFXpert</i> RF analyser and monitor

Please refer to [www.dektec.com](http://www.dektec.com) for the latest pricing and a list of distributors and resellers.