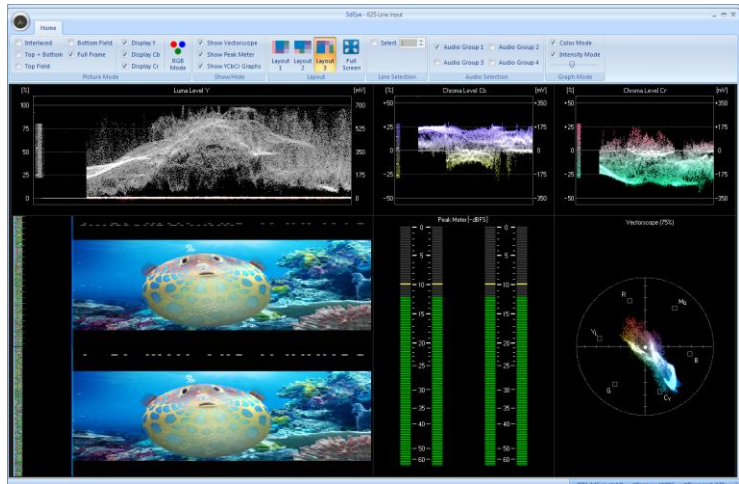


SDI Analysis and Monitoring Software

- ❑ YCbCr/RGB waveforms and vectorscope
- ❑ SDI structure and audio peak meter
- ❑ Contemporary user interface

FEATURES

- Cost-effective real-time waveform analyser for SMPTE-259M signals
- Displays picture, YCbCr/RGB waveforms, vectorscope and peak meter
- Various picture display modes: interlaced, top- or bottom-field only, top and bottom field, full SDI frame
- User can select whether he wants to display Y, Cb, Cr, R, G and/or B components in the picture
- Each graph can be individually enabled or disabled
- Full-screen mode
- Contemporary GUI with quick access buttons and user-selectable window layout
- Supports all DekTec SDI-capable adapters including bus-powered USB-2 units for portable SDI monitoring



APPLICATIONS

- Cost-effective SDI monitoring

KEY ATTRIBUTES

Parameter	Value
Input Signal	SMPTE-259M

PC REQUIREMENTS

Platform	Windows XP/2k3/Vista, 1024MB
Processor*	Core, Core 2, Core i7

* Or equivalent AMD processor

** For use with DTU-225/245 Core 2 or better is required

SUPPORTED INPUT ADAPTERS

Bus	Supported Adapters
PCI	DTA-124, DTA-145, DTA-160
PCI Express	DTA-2144, DTA-2145
USB-2	DTU-225, DTU-245

ORDERING INFORMATION

Type	Description
DTC-335	SdEye SDI Waveform Monitor

Please refer to www.dektec.com for the latest pricing and a list of distributors and resellers.