

Transport-Stream Analyser Software

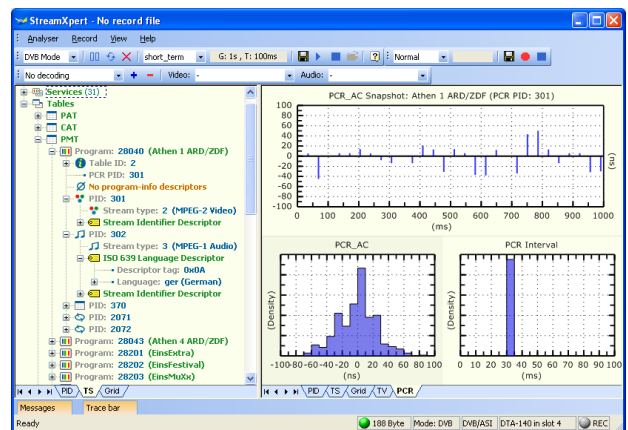
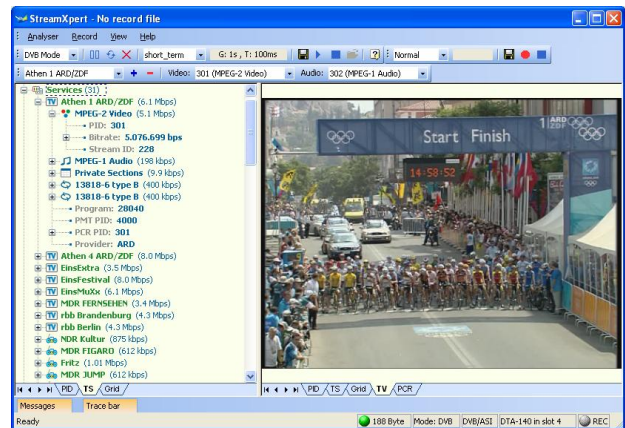
- ❑ Full decoding of DVB/SI and ATSC/PSIP
- ❑ Real-time TR 101 290 monitoring
- ❑ SD/HD live decoding; PCR analysis

FEATURES

- Real-time analysis, monitoring and recording of MPEG-2 transport streams
- Provides detailed statistics on PIDs, services and tables found in the transport stream
- Deep decoding of PSI, DVB-SI, DVB-RCS and ATSC-PSIP tables and descriptors
- User-definable TR 101 290 templates
- Integrated SD/HD video and audio decoder with support for MP2 / H.264 / VC-1 (upgrade option) video and MP1 / MP2 / (HE-)AAC / AC3 audio
- Support for analysing TSolP streams via a DTA-160 or a local network port
- The world's most cost-effective and user-friendly MPEG-2 transport-stream analyser

APPLICATIONS

- Test and validation of equipment with transport-stream output, e.g. multiplexers
- Quality monitoring of MPEG-2 transport streams in studios, head ends, etc.



SUPPORTED INPUT ADAPTERS

Signal Type	Supported Adapters
DVB-ASI	DTA-112, DTA-115, DTA-124, DTA-145, DTA-160, DTA-545, DTA-2142, DTA-2144, DTA-2145, DTU-225, DTU-245, DTE-3120
DVB-SPI	DTA-122, DTA-2142
Receivers	DTA-2135, DTA-2137, DTU-234, DTU-235, DTU-236
TSolP	DTA-160, PC network port

PC REQUIREMENTS

Platform	Windows XP/2k3/Vista
Processor	P4@1.7Ghz* (SD-decoding) Core 2, Core i7* (HD-decoding)

* Or equivalent AMD processor

RELATED PRODUCTS

Type	Description
DTC-335	<i>SdEye</i> SDI analysis software
DTC-345-DVB+	<i>DVBAnalyzer</i> advanced analysis
DTC-350	<i>VISUALmpeg</i> MPEG/AVC video ES and quality analyser

ORDERING INFORMATION

Type	Description
DTC-320	<i>StreamXpert</i> TS analyser
DTC-320-DGL	<i>StreamXpert</i> for PC network port (dongle)
DTC-390-VC1	VC1 decoder option

Please refer to www.dektec.com for the latest pricing and a list of distributors and resellers.