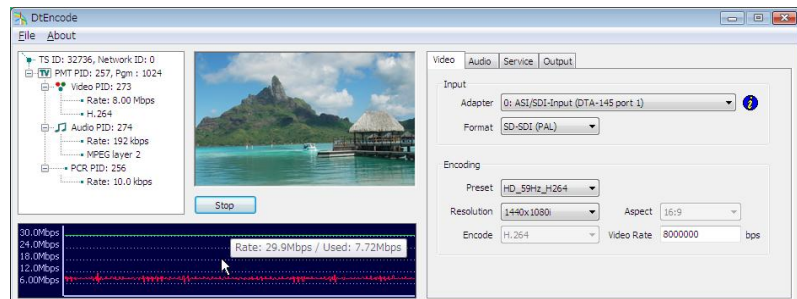


# Real-Time Video and Audio Encoder Software

- Program encoder in software
- SD, HD and mobile encoding
- Generates basic PSI/SI information

## FEATURES

- Software for real-time encoding of uncompressed video and audio into a Single-Program Transport Stream (SPTS) with real-time output to any DekTec output adapter
- MP2 and H.264 video
- MP2 layer 2 and AAC audio
- Simple configuration of Transport-Stream parameters through an XML settings file: PIDs, program number, TS ID, Network ID
- Presets available for common networks and regions
- Multiple encoding options available: Standard Definition (SD), High Definition (HD) and encoding for mobile TV for 1-segment ISDBT or DVB-H
- Convenient visual monitoring in GUI of input video, rate and TS structure



- Basic SI insertion for direct RF output from DekTec modulator cards
- PC screen can be used as input
- Remote control through SNMP and SOAP

## APPLICATIONS

- Local broadcasting
- Test-stream generation
- Transmitting PC screen contents as an MPEG-2 Transport Stream

## SUPPORTED INPUT ADAPTERS

Signal Type	Supported Adapters
Input CVBS	Osprey 240e, Osprey 440
Input SD-SDI	DTA-124, DTA-145, DTA-160, DTA-545, DTA-2144, DTA-2145, DTU-225, DTU-245
Output TS	DTA-102, DTA-105, DTA-107(S2), DTA-110(T), DTA-112, DTA-115, DTA-116, DTA-117, DTA-145, DTA-160, DTA-545, DTA-2144, DTA-2145, DTE-3100, DTU-205, DTU-245

## PC REQUIREMENTS

Platform	Windows XP/2k3/Vista, 2GB
Processor	Core, Core 2, Core i7 (HD AVC)

## ORDERING INFORMATION

Type	Description
DTC-315-nPT	DtEncode, n points: 1 point – SD encoding 2 points – HD encoding 4 points – Mobile encoding

Please refer to [www.dektec.com](http://www.dektec.com) for the latest pricing and a list of distributors and resellers.