

Multipath Fading Simulator and AWGN Generator

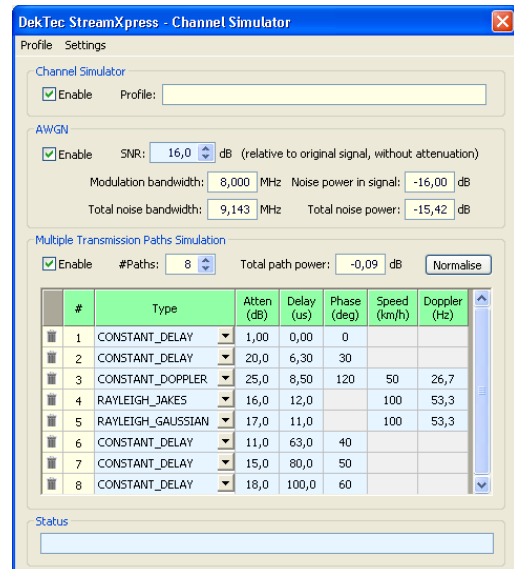
- Simulate channel impairments
- Rayleigh fading with 2 noise spectra
- Gaussian noise with adjustable SNR

FEATURES

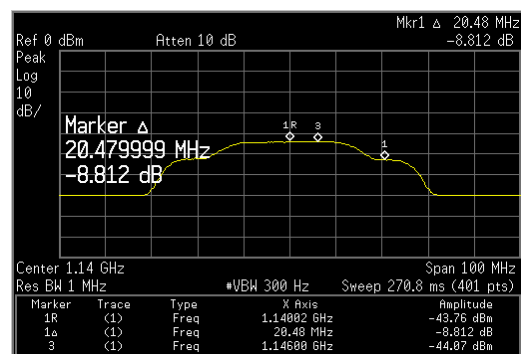
- Software option to add real-time channel simulation to the DTA-115 and DTU-215
- Simulates up to 32 fading paths of either *Constant Delay*, *Doppler*, *Rayleigh Jakes* or *Rayleigh Gaussian* path distortion on the modulated RF signal
- Addition of Additive White Gaussian Noise (AWGN) to the output of the DTA-107, DTA-115 and DTU-215 modulators
- Simple interface to add calibrated noise to the output of a DekTec modulator card
- Noise bandwidth is adjusted to suit the modulation type
- Distortions are applied in the digital domain for consistent operation and repeatability

APPLICATIONS

- Cost-effective evaluation of tuner and demodulator performance in R&D
- Production test of tuner performance giving a fast, reliable and accurate method of ensuring quality control
- Demonstration of the capabilities of tuner and demodulator chip sets



8-path fading and 16dBc AWGN with a DTU-215



8.8dBc AWGN generated with DTA-107-S2 at 1.14GHz

OPERATING RANGE

Parameter	Value
Number of fading paths	0 .. 32 *1
Path delay	0 .. 896μs *2
AWGN	0 .. 30dBc

*1 Maximum number of echo paths depends on CPU speed.
 *2 For 8-MHz DVB-T. Maximum varies per modulation standard.

PC REQUIREMENTS

Platform	Windows XP/2k3/Vista/7, 1GB
Processor	Core2 @ 2GHz*, Core i5 or higher

* Or equivalent AMD processor

SUPPORTED ADAPTERS

DekTec modulator	Supported modes
DTA-107	AWGN
DTA-111, DTA-115, DTA-116, DTA-117, DTU-215	AWGN and multipath fading

ORDERING INFORMATION

Type	Description
DTC-305-CM	XpressSim fading and AWGN simulator option

Please refer to www.dektec.com for information on product pricing, bundle discounts and a list of DekTec distributors and resellers.